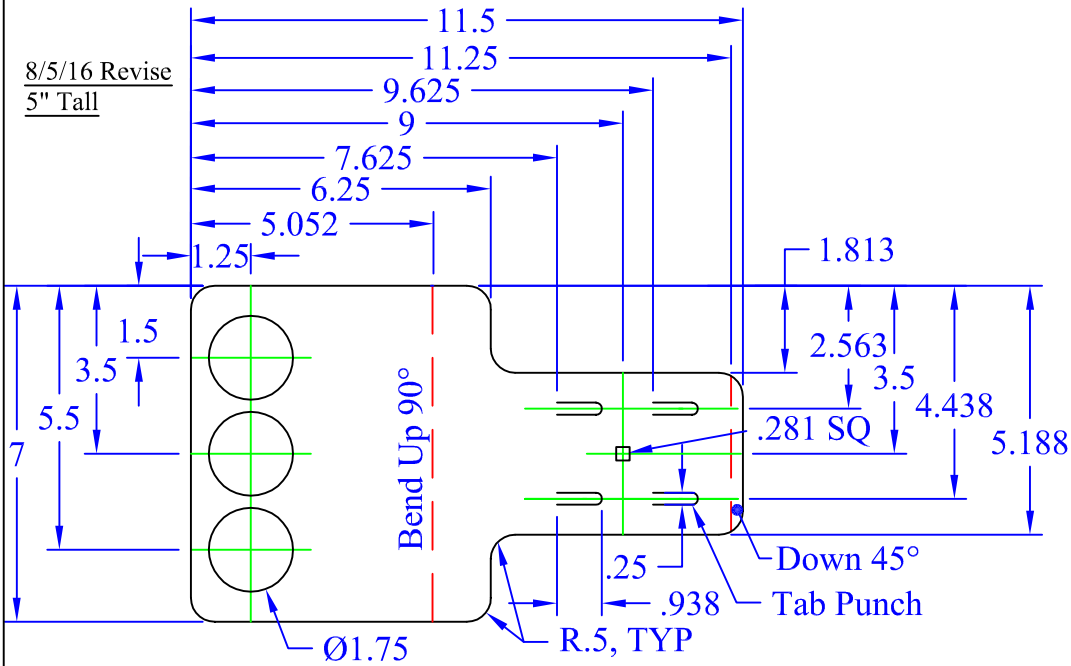
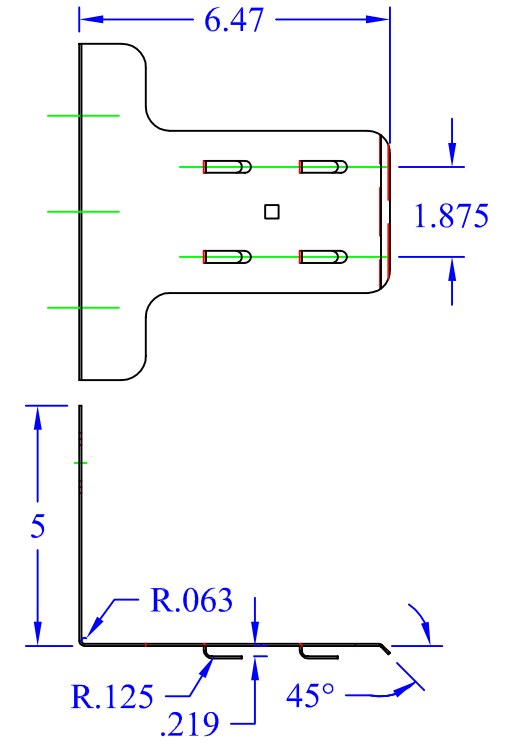
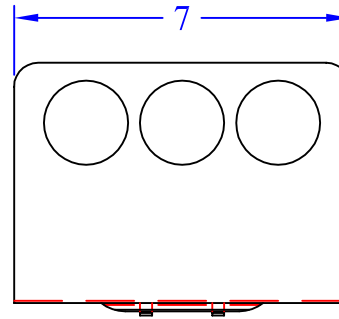


8/5/16 Revise
5" Tall



Flat Pattern View



Formed View

General Notes:

- 1) Material:
 - A) Commercial Quality mill galv steel per ASTM A653 & A924 w/ G-90 Coating Min Yield - 33 KSI
 - B) Commercial HRPO steel per ASTM A569
- 2) Dimensional Tolerances
 - A) General: $\pm 1/16"$
 - B) Slot Location: $\pm 1/32"$
 - C) Angular: $\pm 2^\circ$
- 3) Material Thickness (NOM): 18 GA. GALV. = .0435
Finish: Electro-Galvanized Per ASTM B633-SC1, Type 3



This drawing in design and detail is the property of WBT, LLC. and must not be used except in connection with our work. All rights of design or invention are reserved.

PART # OR NAME Conduit Attachment 3 -1.25			DRAWN BY RJM	
SIZE A	DATE 8/4/16	SCALE 3"=1'	SHEET 1 OF 1	REV 8/5