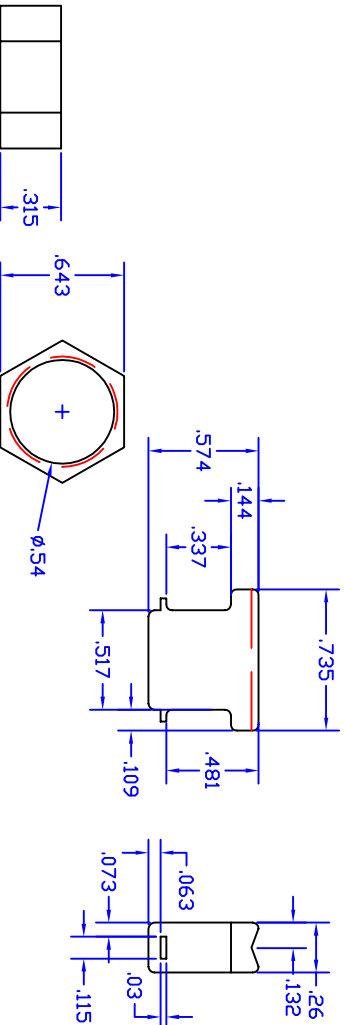
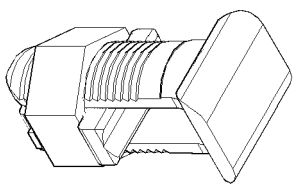
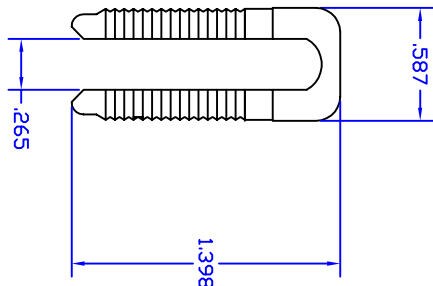
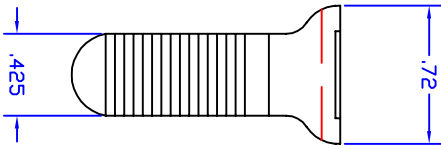


| REVISIONS | | | | |
|-----------|-----|-------------|------|----------|
| ZONE | REV | DESCRIPTION | DATE | APPROVED |
| | | | | |



General Notes:

- 1) Materials:
 - A) Black Carbon Steel
Commercial Quality HRPO
Steel Per ASTM A569
Electroplated After Fabrication
Per ASTM B 633 (SC1)
 - a. Silver Zinc
 - b. Black Zinc
 - B) Stainless 316L
- 2) Dimensional Tolerances
 - A) General: $\pm .015"$
 - B) Angularity: $\pm 2^\circ$
- 3) All Units Inches
- 4) Material Thickness (MIN): 12 GA. = .0966



Copper Ground Bolt

This drawing in design and detail is the property of WBT, LLC, and must not be used except in connection with our work. All rights of design or invention are reserved.

| | | | |
|----|------------|---------------|--------|
| CN | SIZE: A | Date: 7/26/13 | REV: A |
| | SCALE: 1:1 | | SHEET |